

CHROMOVIEW™ KARYOTYPING SERVICES

BY EVERCELL BIO

Genomic Confidence, made simple.

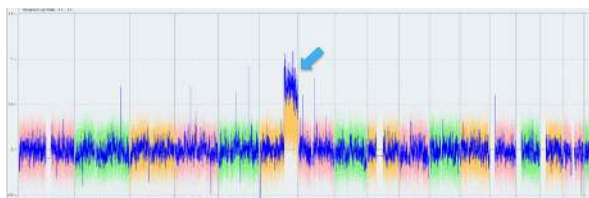
Genomic instability remains one of the most significant risks associated with long-term human stem cell culture. Subtle chromosomal alterations can impact phenotype, differentiation capacity, reproducibility, and downstream translational potential. Proactive, continuous monitoring of genomic integrity is therefore essential for advancing research programs with confidence. Through our ChromoView™ Karyotyping Service Platform, we provide a high-resolution alternative to traditional G-banded karyotyping by leveraging the Thermo Fisher Cyto Accel HD Array Kit. This array-based technology delivers comprehensive whole-genome coverage for accurate detection of chromosomal abnormalities in human primary and stem cell populations, enabling earlier risk identification and more informed experimental decision-making.

SERVICES DESIGN SUMMARY

SERVICE NAME	ChromoView HD Karyotype Assay
SAMPLE TYPE	Cell Pellet
ASSAY METHOD	Cyto Accel HD Array
TIMELINE	< 3 weeks
REPORT	PDF report with analysis
OTHER INFO	Custom analysis options and/or raw data file available upon request. Additional fees required

SAMPLE RESULTS

A full genome view of sample is provided with the report. In the example chromosome 6 has a gain with a copy number =3



SERVICES FEATURES

High Resolution

Microarray resolution that is 5x higher than traditional G-banding. Over 2.7 million markers (>700K SNPs) for wide genomic coverage.

Rapid and Reliable Results

Advanced scanning technology via GCS3000 that includes autocalibration, low variability and is suitable for clinical applications. Turn around time of three weeks or less.

Easy Sample Prep

Our assay requires input of a frozen cell pellet, avoiding need to ship live cells

Broad Cell Type Compatibility

All human primary and stem cell types accepted.

We build the tools so you can focus on discovery.

To request a free consultation or to learn more, visit www.evercellbio.com.
EverCell Bio, Inc. 27 Strathmore Rd Natick, MA 01760. Doc Version: 001.0